

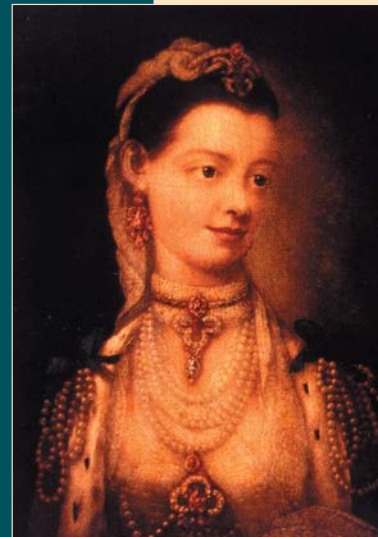
Charlotte



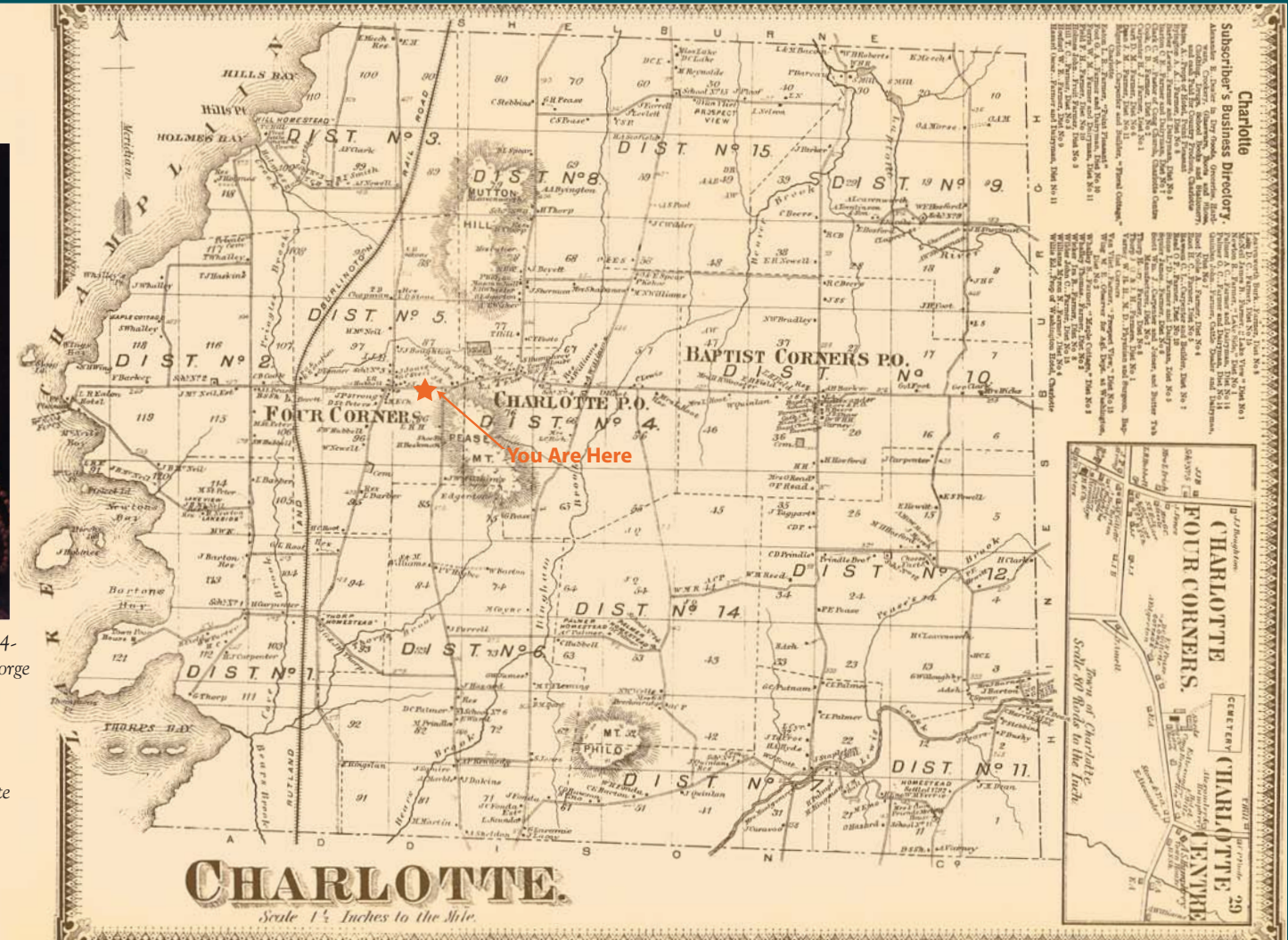
On June 24, 1762, King George III of England granted 23,060 acres (about six square miles) for incorporation into a township named “Charlotta,” honoring George’s new German-born wife, Charlotta von Mecklenburg-Strelitz. After several years, the last syllable was dropped and the town became “Charlotte,” but retained the original pronunciation emphasizing the second syllable (shar-LOT). Early settlers were primarily from Connecticut and Dutchess County, New York. Several were veterans of the Revolutionary War and are buried in Barber Cemetery located to the southwest on Greenbush Road.

Charlotte was primarily agricultural instead of commercial and a large village or community center never developed. There were several mill sites, but topography limited settlement. Three centers evolved in the town: Charlotte Center, the geographical center, was a cluster of buildings around the Congregational Church and the current Charlotte Museum. Baptist Four Corners is in the eastern part of town. Charlotte Four Corners (the “West Village”), formed by Ferry and Greenbush roads, is the largest. The advent of the railroad in 1847-49 enhanced commercial interests in this western section of town.

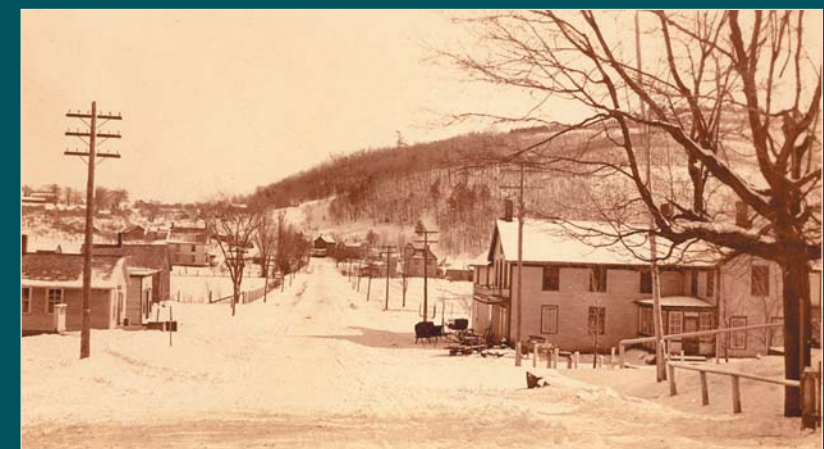
West Village development reflects local adaptations of several architectural periods such as Federal, Late Victorian, Queen Anne Victorian, and Colonial Revival. On the northwest corner of the intersection Joseph Barton built a large Federal-era style tavern (c. 1811). Lakeview Seminary (c. 1881) is located south of the “Four Corners.” John Dewey, the famous American philosopher, psychologist, and educator, was the first principal of the Seminary in 1881-82 which served as a school from its inception until 1949.



Princess Charlotta (1744-1818) married King George III when she was 17. Several other places in North America are named in her honor. Courtesy of the Charlotte Historical Society.



On the northeast corner of the “Four Corners” is the Old Brick Store, c. 1850, built by Dr. Luther Stone. On the southwest corner is Dr. John Strong’s house (c. 1800). The Town’s whipping post and stocks were once nearby.



Looking east toward Charlotte Center, c. 1915. Note the sleighs near the center of the photograph. The Town purchased its first snow plow in the winter of 1929-1930. Until that time winter travel was by horse or sleigh. The snow would be packed by large rollers drawn by horses, and occasionally large drifts would have to be shoveled by hand.

Courtesy of Tuttle Publishing Company.

Courtesy of Perceptions, Inc., Charlotte, VT.