

# Welcome to Shelburne Bay



People have launched boats from this site for centuries. Early European settlers found evidence of a Native settlement—a cleared field, flints and arrowheads—just across the LaPlatte River. The fertile soil and the shelter of Shelburne Bay made this area an ideal place for a village.

The bay's usually calm surface was an important factor when the 112-mile Lake Champlain was used as a "water highway," before the advent of the railroad, automobile and airplane. Back then, the bay was a busy place. Champlain Transportation Company, based at Shelburne Shipyard, built many side-wheel passenger steamboats between the 1829 launching of the *General Green* and 1906 when the *Ticonderoga* first floated. Archeologists have found a dozen steamboat shipwrecks in the bay!



## The Shelburne Shipyard

During World War II, five submarine chasers were built here. The SC1029, built of local oak in 1942 rather than the pine specified by the Navy, survived an explosion during amphibious landings near St. Tropez, France on August 15, 1944. Both the SC 1029 and SC 1030 were transferred to the French Navy in October 1944.

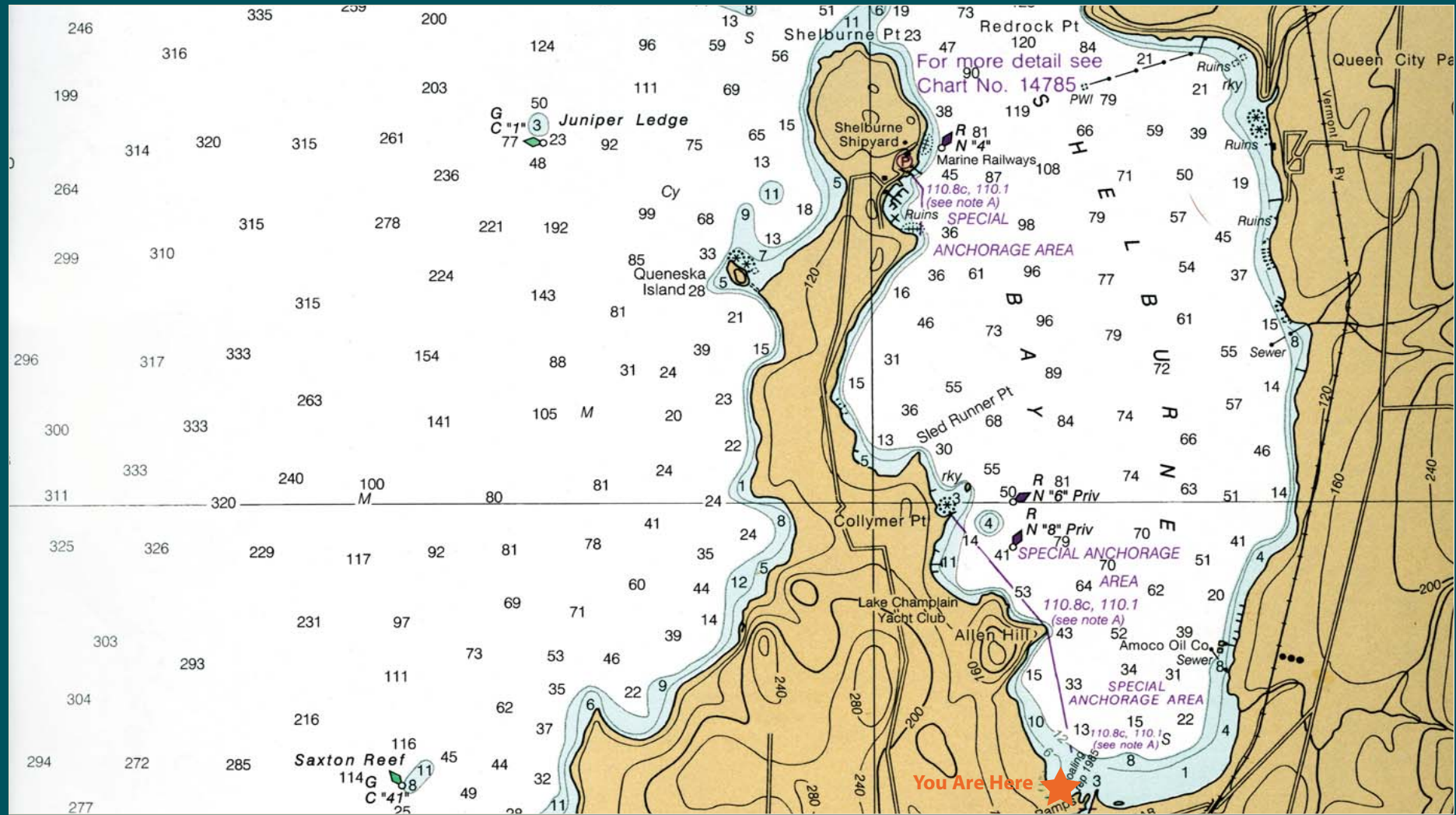
Courtesy of Bailey-House Library Special Collections and Landscape Change Program, University of Vermont, [www.uvm.edu/lcp/landscapes](http://www.uvm.edu/lcp/landscapes)



## The Lovely LaPlatte

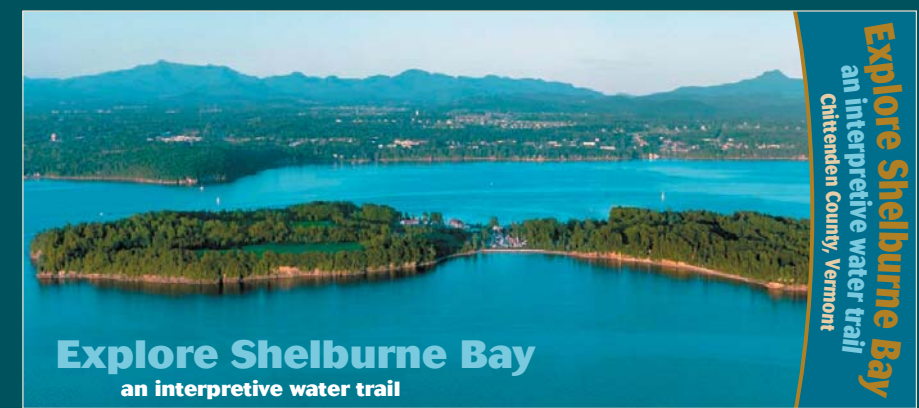
The LaPlatte River is a safe place for canoes and kayaks when the north wind churns up Shelburne Bay. Head upstream under the Bay Road Bridge and follow the slow-moving, river upstream through a deep rush marsh, floodplain and upland forests. Abundant wildlife can be seen along the LaPlatte, including beaver, otters, bobcats, herons and numerous other species of mammals, birds, fish, reptiles and amphibians. This area can also be explored on foot via a small footpath, which begins just across Bay Road.

Lake Champlain Land Trust



For more detail see Chart No. 14785

From NOAA Chart #14785



## Explore the Bay

Boaters can learn more about Shelburne Bay from the water using "Explore Shelburne Bay: an Interpretive Water Trail." The 20-page booklet guides boaters to unique sites in the Bay. Follow the route and you'll see the 500-million-year-old Champlain Thrust Fault, magna dikes where lava flowed up through the layers of rock—you might even spot a shipwreck! For a copy, stop by the Shelburne Recreation Department in the town offices or call the Chittenden County Regional Planning Commission at 802-846-4490.

Chittenden County Regional Planning Commission

