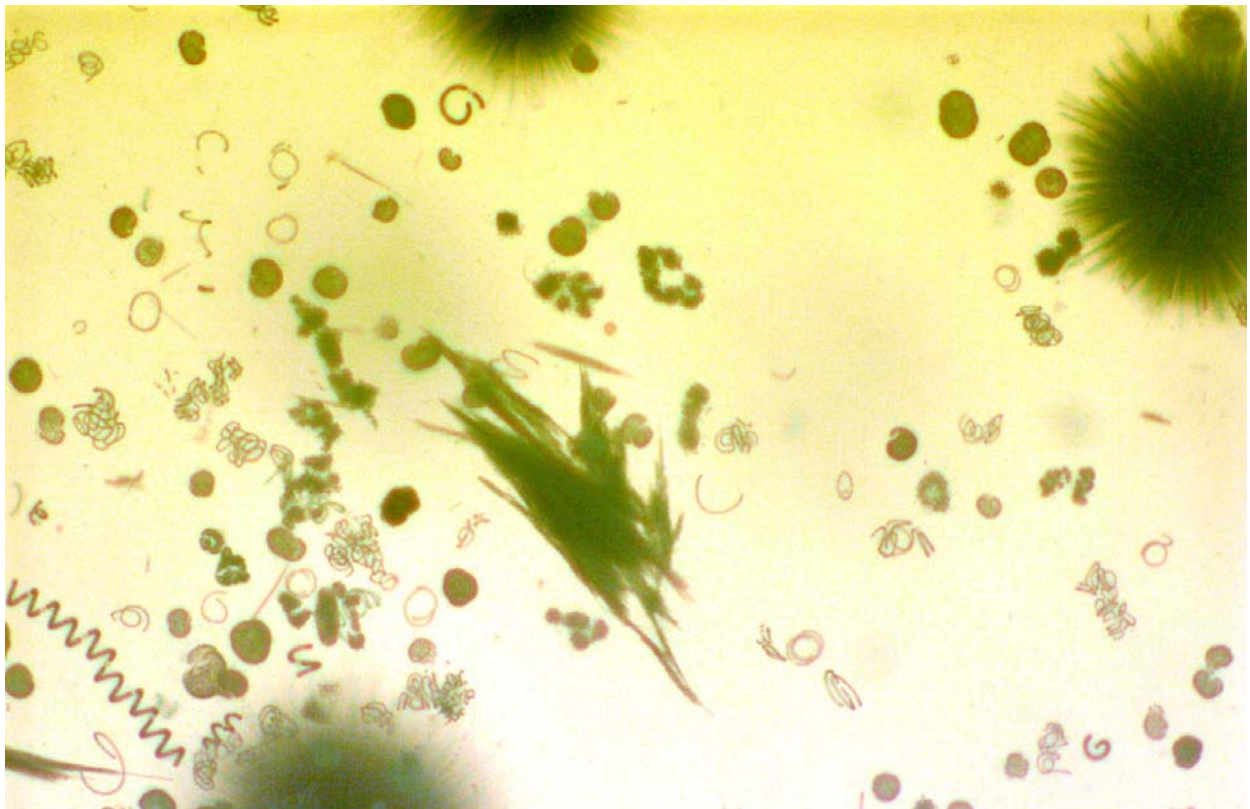


Pictorial Guide to Common Phytoplankton of Lake Champlain and the Lower Great Lakes



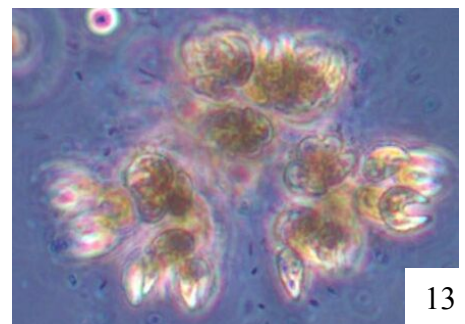
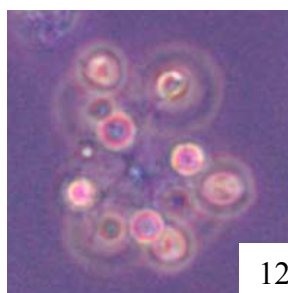
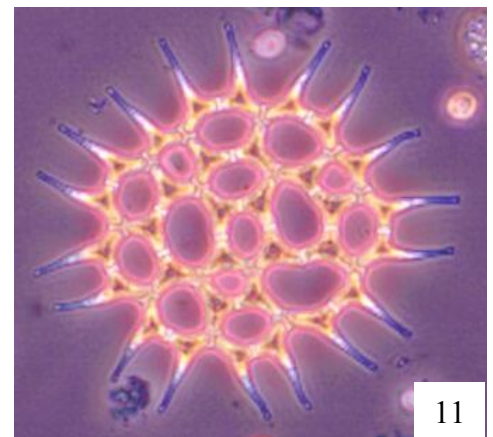
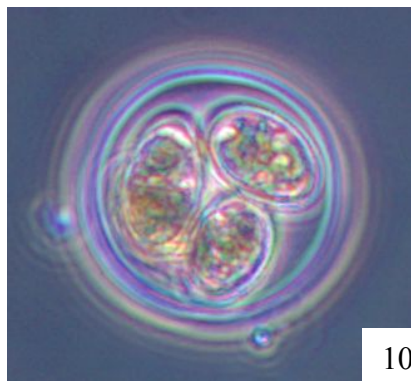
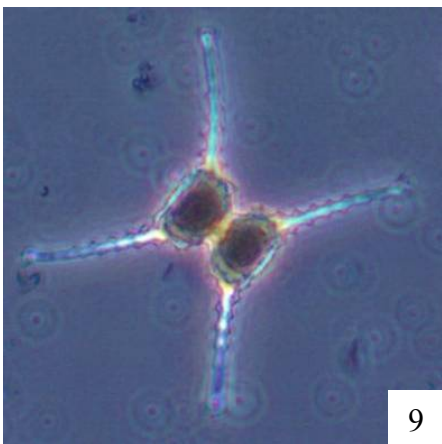
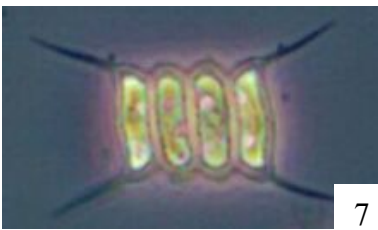
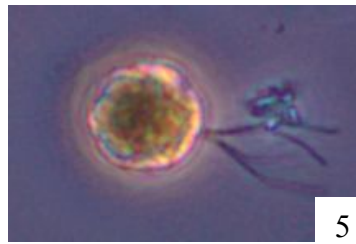
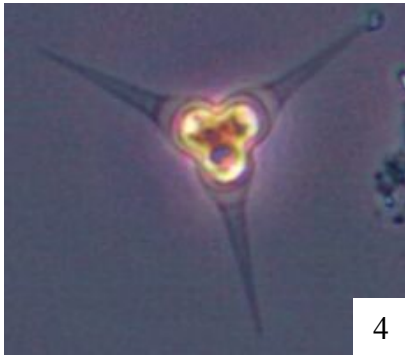
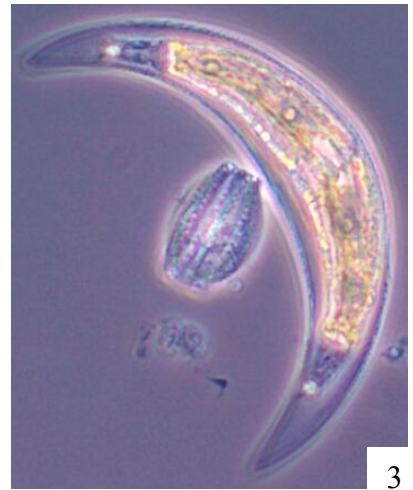
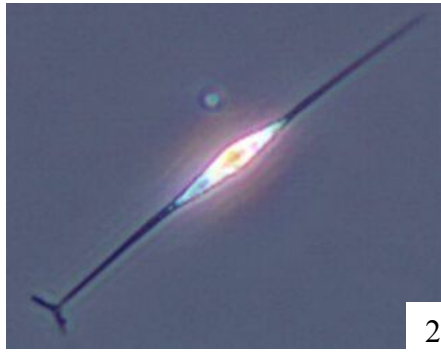
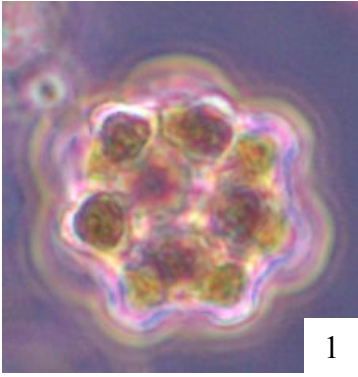
The
UNIVERSITY
of **VERMONT**

Chlorophyta: Green algae

1. *Coelastrum microporum* Näg.
2. *Schroederia steigera* (Schroed) Lemm.
3. *Closterium* sp.
4. *Treubaria* sp.
5. Flagellated Chlorophyte #3
6. *Eudorina* sp.
7. *Scenedesmus quadricauda* (Turp.) Bréb.
8. *Xanthidium* sp.
9. *Staurastrum* sp.
- 10 *Oocystis* sp.
11. *Pediastrum duplex* Meyen
12. *Gloeocystis gigas* (Kütz.) Lagerh.
13. *Kirchneriella* sp.



Chlorophyta: Green algae

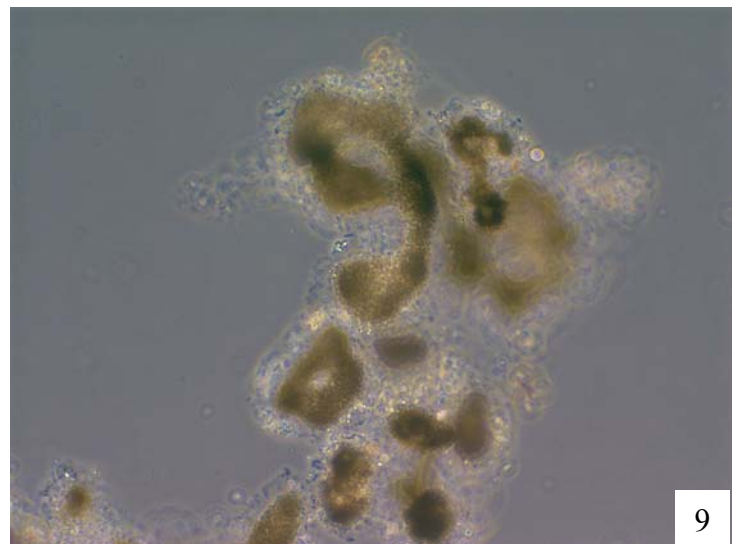
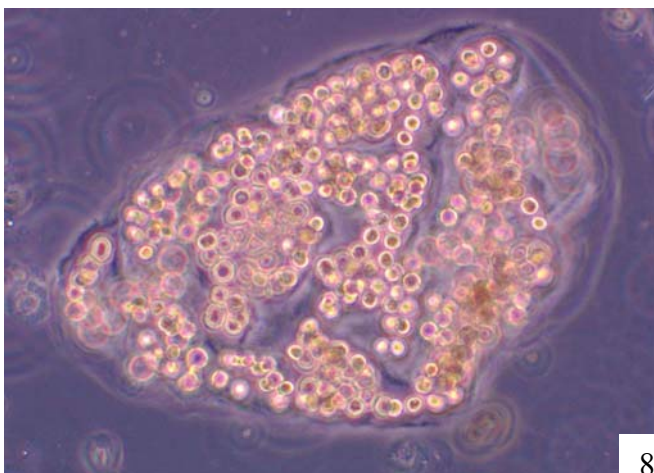
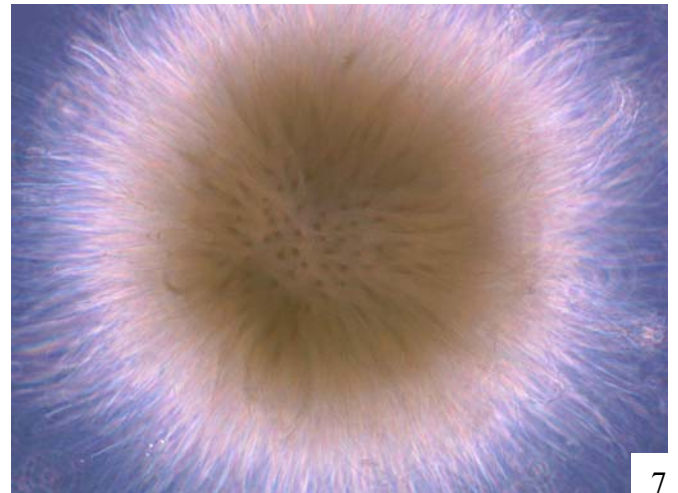
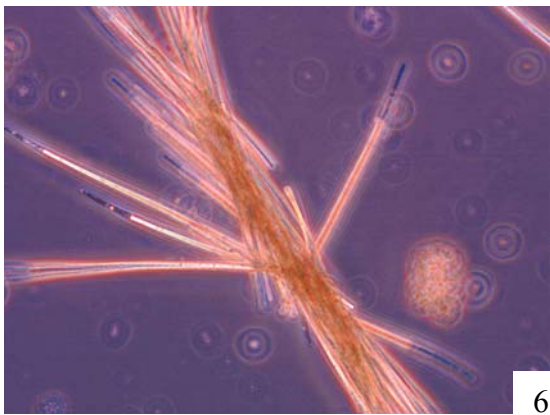
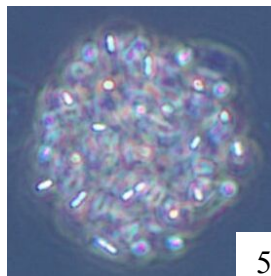
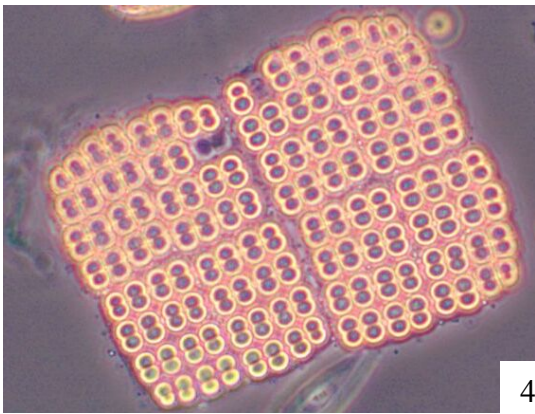
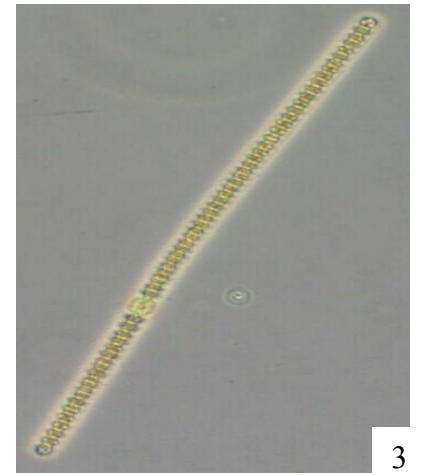
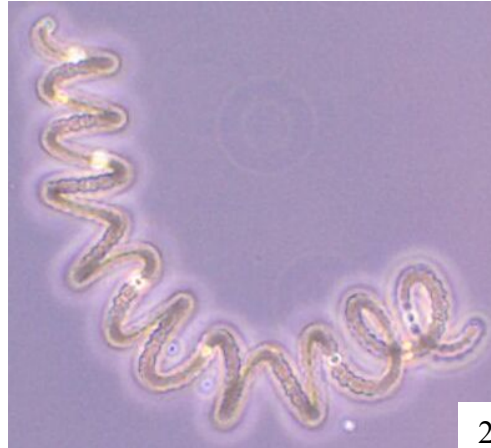


Myxophyceae: Cyanobacteria

1. *Anabaena flos-aquae* (L.) Bréb.
2. *Anabaena circinalis* Rabenhorst
3. *Anabaena planktonica* Brunnthaler
4. *Merismopoedia* sp.
5. *Aphanothece* sp.
6. *Aphanizomenon flos-aquae* (L.) Ralfs
7. *Gloeotrichia* sp.
8. *Microcystis wesenbergii* Kom.
9. *Microcystis aeruginosa* Lemm.



Myxophyceae: Cyanobacteria

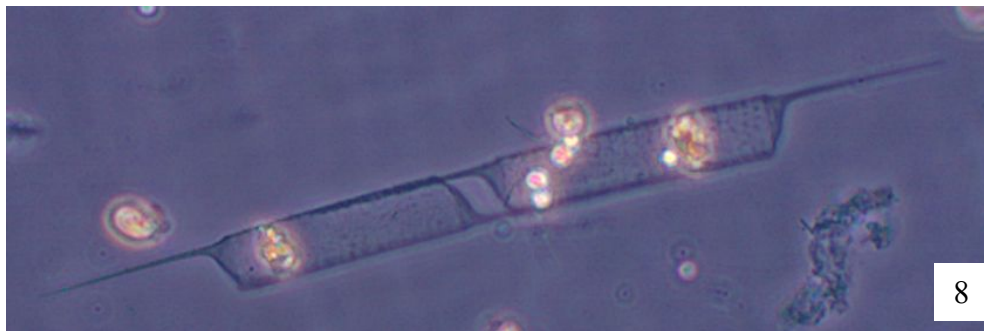
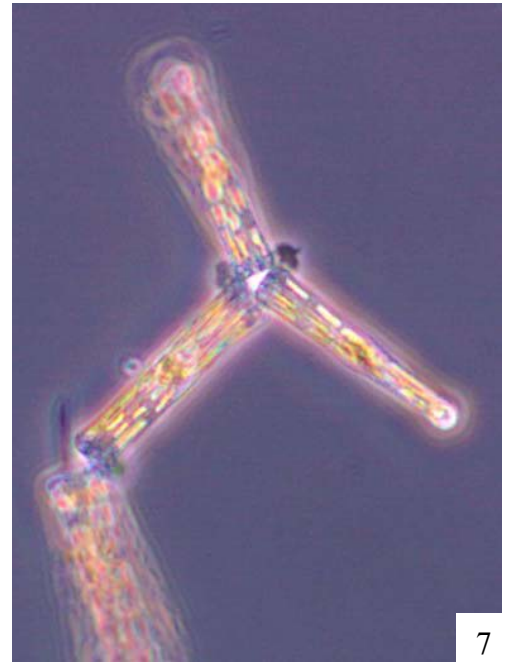
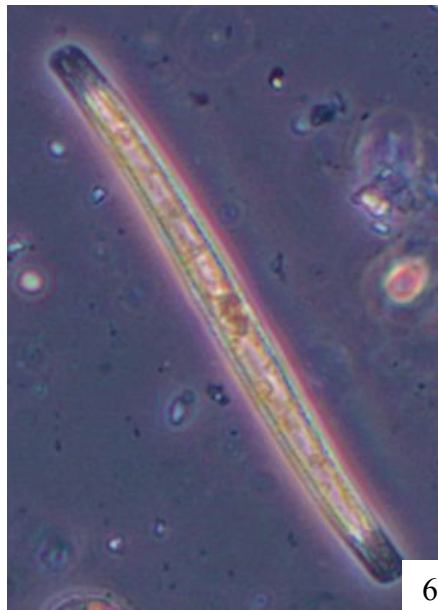
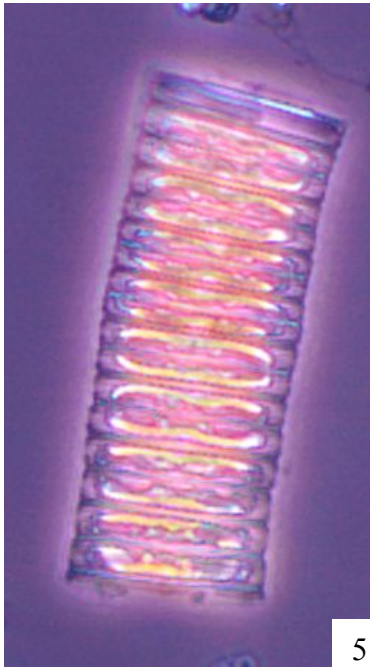
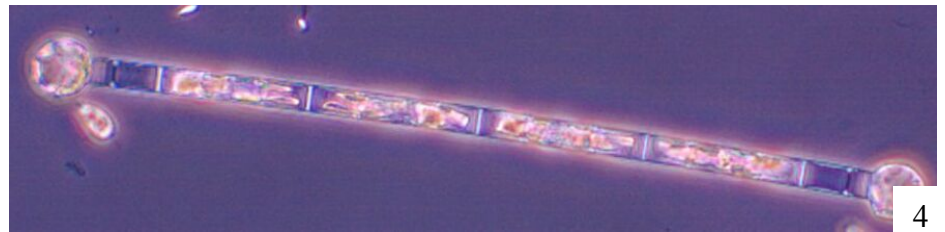
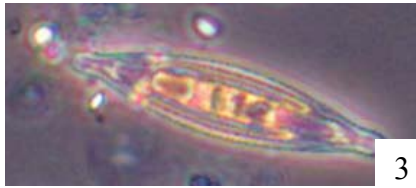
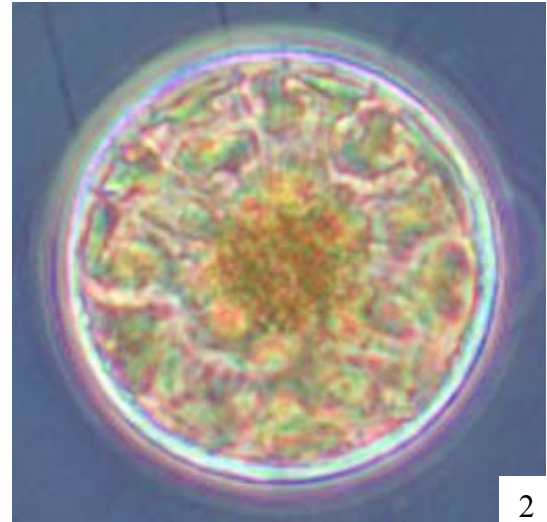
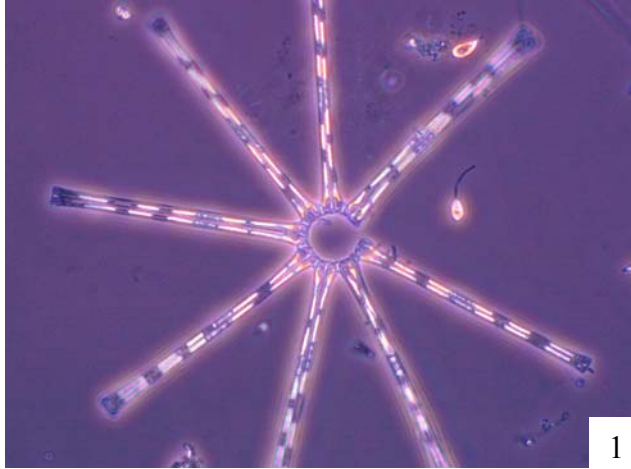


Bacillariophyceae: Diatoms

1. *Asterionella formosa* Hass.
2. *Stephanodiscus* sp.
3. *Navicula* sp.
4. *Aulacoseira* sp.
5. *Fragilaria* sp.
6. *Nitzschia* sp.
7. *Tabellaria* sp.
8. *Rhizosolenia* sp.



Bacillariophyceae: Diatoms



Dinoflagellates and Chrysophytes

1. *Cryptomonas ovata* Ehr.
2. *Chroomonas acuta* Utermöhl
3. Chrysophyte unknown
4. *Dinobryon sertularia* Ehr.
5. *Ceratium hirudinella* (O.F. Müll.) Dujardin
6. *Peridinium* sp.
7. *Mallomonas pseudocoronata* Prescott
8. *Gymnodinium* sp.



Dinoflagellates and Chrysophytes

