



Lake Champlain Basin Program

Education & Outreach



PATRICK LEAHY

**Lake Champlain
Basin Program**



**NE
IW
PCC**

INFORMED AND INVOLVED PUBLIC



Goal:

Basin residents and visitors will understand and appreciate Lake Champlain Basin resources and will possess a sense of personal responsibility that results in behavioral changes and actions to reduce pollution.





E & O Team



Education & Outreach

- Audiences & Messaging
- Current Work
- Core Areas
- Challenges

Audiences

- “General Public”
- Homeowners
- Teachers & Students
- Recreational users

Audiences

- Elected officials/Policy Makers
- Partners & Grantees
- Business community
- Scientific Community

Messaging

- State of the Lake issues
- Place-based education
- Who is helping
- Individual action
- How to get involved

Education & Outreach

- **Current Work**
- Priorities
- Challenges

Staff Work Highlights

Resource Room

Staff welcomed **38,801** visitors in 2024.



Staff Work Highlights

World Water Day 2025

31 watershed partners welcomed the public



Staff Work Highlights

Watershed for Every Classroom

Led **16** K-12 educators on exploration of watershed science and cultural heritage.



Staff Work Highlights

Community Fishing Workshops

Supported **3** community fishing workshops with Sea Grant and other local organizations



Staff Work Highlights

Upward Bound Expedition Trips

Continued a long-standing partnership with SUNY Plattsburgh to support trips for first generation college bound high school students



Staff Work Highlights

Outreach Stewards

Reached **2,987** people at fairs, farmer's markets, and other community events last year.



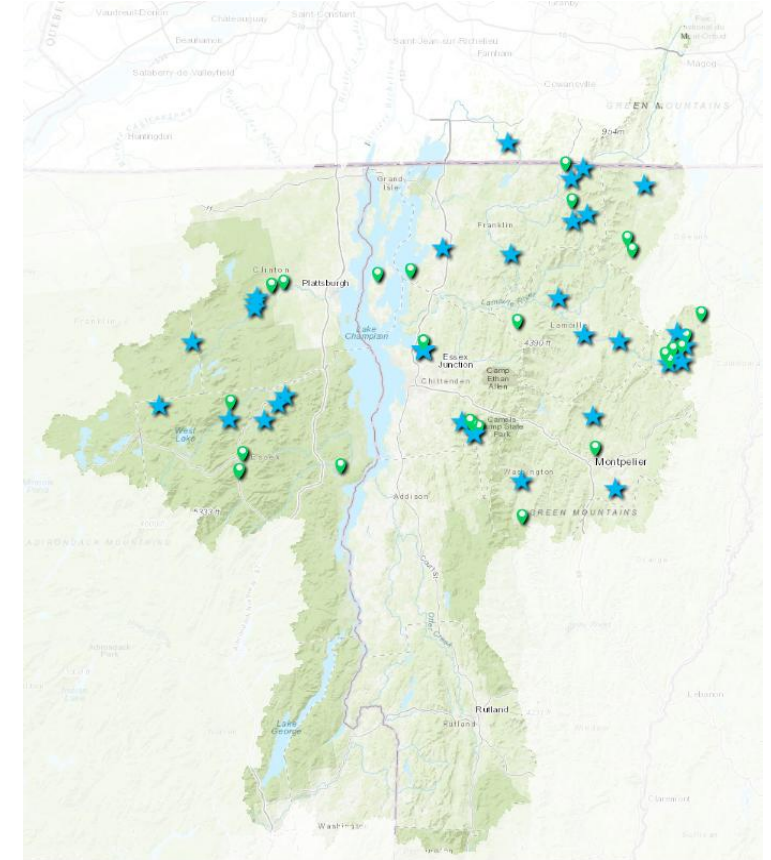
Staff Work Highlights

Stream Wise

13 organizations participated in the 2024 season.

82 properties were assessed and

55 landowners earned the Stream Wise Award!



Stream Wise Award Map

Explore the growing Stream Wise community.



INFORMED AND INVOLVED PUBLIC

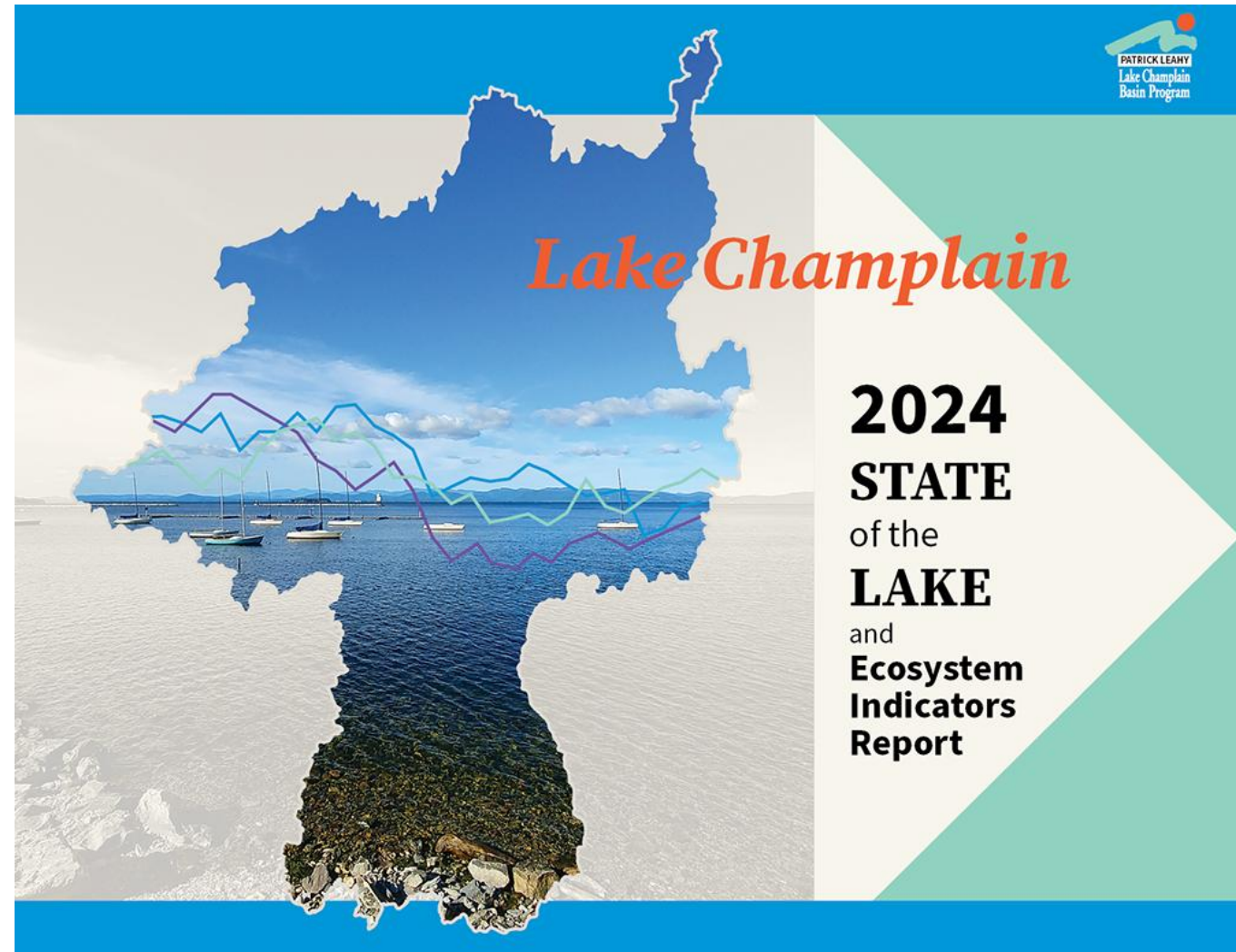
Staff Work Highlights

Web Social Media Casin' the Basin



Staff Work Highlights

State of the Lake



culture

COURTESY OF EMILY-HANSEN/STONIC



The Champlain Trio

In Concert

Seven Vermont chamber music events not to miss this summer

BY AMY LILLY - lilly@sevendaysvt.com

Summer is Vermont's finest season — at least if your measure is chamber music. Its practitioners fairly swarm the state from June through August, playing at festivals and concert series that span the length and breadth of the Green Mountains and environs. Here are seven not to miss.

Adamantly Local

The ANNE WASILY AND VIRA KOLISH MUSIC EXPERIENCE CONCERT SERIES takes place in idyllic Adamant, an unincorporated village of Calais and a beautiful drive from anywhere on a summer day. This year's five concerts, coordinated by New York City-based pianist Adam Tendler, feature him and four other staples of the Vermont classical scene: the Champlain Trio (Letitia Quante, violin; Emily Taubli, cello; Hiromi Fukuda, piano), pianists Paul Orgel and Michael Arnowitt, and TURNmusic. Tendler, from Barre, earned a 2019 Lincoln Center Award for Emerging Artists. For the acclaimed *Inheritances*, he commissioned 16 of new music's starriest composers; a recording on New Amsterdam Records came out in 2024.

The Anne Wasily and Vira Kolish Music Experience, June 14, June 28, July 19, August 9 and August 30, 6 p.m., at Frank

52 SEVEN DAYS MAY 21-28, 2025

Suchomei Memorial Arts Center & QuarryWorks in Adamant. Free. fsmac-quarryworks.org

Hop to It

The main focus of the GREEN MOUNTAIN CHAMBER MUSIC FESTIVAL is its 200-plus dedicated young string students, who practice for hours a day at Saint Michael's College in Colchester. But many of the festival's offerings are open to the public. At Elley-Long Music Center, faculty and invited artists perform in an eight-concert series on Tuesdays and Fridays. This year's visiting quartets are the energizing Balourd Quartet, the Grammy Award-winning Pacifica Quartet. Locals can also hear the students give recitals, or surprise shoppers with live music at "quartet hops" on July 12 and 19 on Burlington's Church Street Marketplace. Elsewhere, catch a master class



Balourd Quartet



Mary Rowell

Summer Preview

with eminent cellist Norman Fischer and informative "conversations" about aspects of the music with Vermont choral director Nathaniel Lew.

Green Mountain Chamber Music Festival, June 29 through August 3 at Elley-Long Music Center in Colchester and other venues. Free to \$50. gmcmf.org

Play On, Players

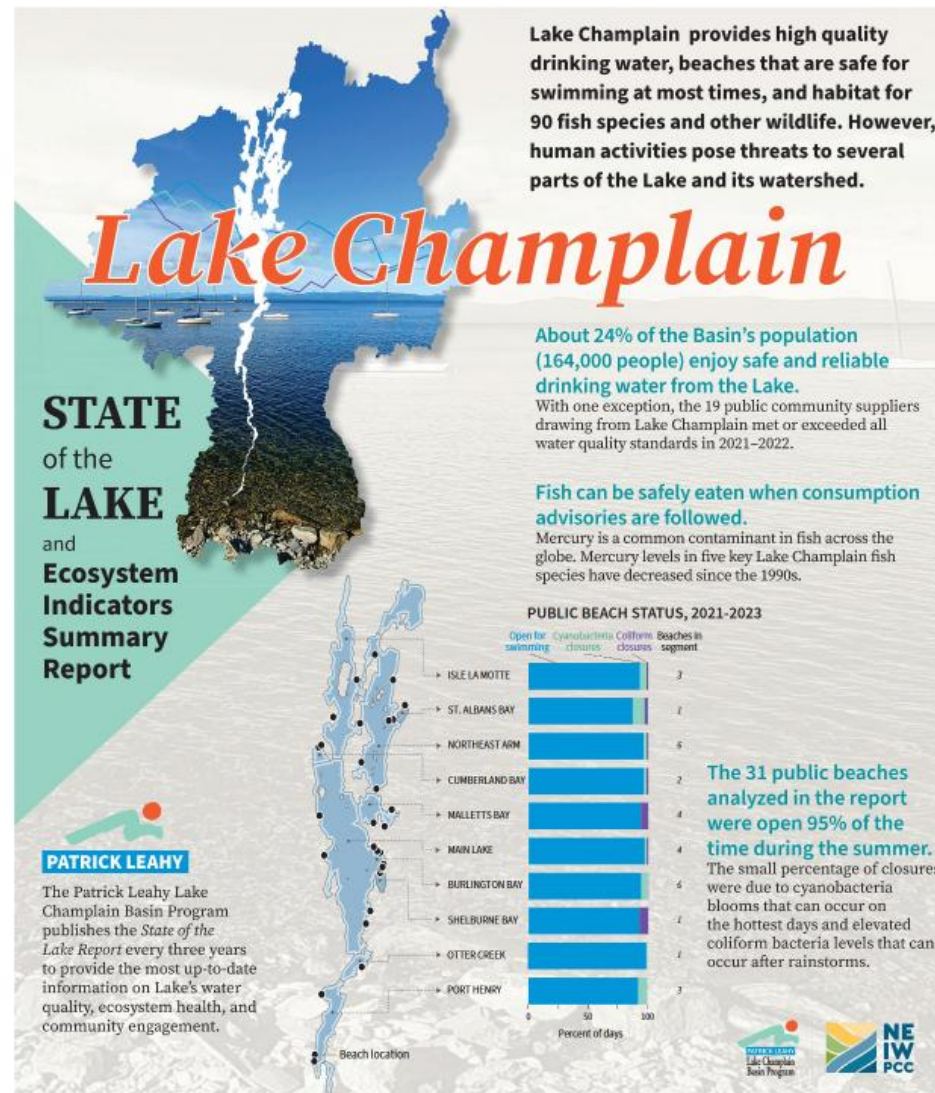
CRAFTSBURY CHAMBER PLAYERS have hosted visiting and Vermont chamber musicians annually since 1966. In place of lectures and master classes, music director and cellist Fran Rowell provides extensive program notes and leads casual preconcert talks by the musicians. The group, which includes Fran's violinist sister, Mary Rowell, will perform six concerts on Wednesdays at Colchester's Elley-Long Music Center and repeat those programs on Thursdays at the Hardwick Town House. The Players tend to lean on enduring masterworks while adding one new piece per program. This year, they'll feature violinist Kenji Bunch's "The Viola Burns Longer" (2024) for solo viola, piano and string quartet; and pianist Inessa Zaretsky's "Songs" (2025) for alto voice, viola and piano.

Craftsbury Chamber Players, Wednesdays, July 9 to August 13, at Elley-Long Music Center in Colchester; and Thursdays, July 10 to August 14, at Hardwick Town House. \$10-25. ccpvt.org

Well Read

MANCHESTER MUSIC FESTIVAL's 51st season, "Music and Storytelling," will draw a literary crowd as much as a musical one. One of its five Thursday-night concerts traces the literary connections of Ludwig van Beethoven's *Kreutzer Sonata* — which inspired poems by Rita Dove, a novella by Leo Tolstoy and Leoš Janáček's String Quartet No. 1. An entire musical-theatrical work inspired by the Faust story caps the season: Igor Stravinsky's *L'Histoire du soldat*, with film actor David Strathairn (*Good Night, and Good Luck*) as the soldier and soprano Christine Goerke as the devil. Other eminences on the program include former Emerson String Quartet violinist Philip Setzer, now in his second year as the festival's artistic director; Pulitzer Prize-winning author Richard Powers; and baritone Randall Scarlata singing six poems by Powers that composer Perry Goldstein set to music and premiered in 2022.

Manchester Music Festival, July 10 through August 7, at Anelli Pavilion at Southern Vermont Arts Center in Manchester and other venues. \$15-80. mmfvt.org



Education & Outreach

- Current Work
- **Core Areas**
- Challenges

E&O Grants

- Small & Large EO Grants
- Professional Development Grants
- Educator Mini-Grants (boots and bugs)



Artist-in-Residence



INFORMED AND INVOLVED PUBLIC

Video Production

2 new "Meet the
Scientist" videos



INFORMED AND INVOLVED PUBLIC

Champlain Basin Education Initiative



INFORMED AND INVOLVED PUBLIC

E&O Stewards



INFORMED AND INVOLVED PUBLIC

LCBP Website Update



Quicklinks



About Us

About the Basin

Our Goals

News & Media

Get Involved

Contact

Clean Water



Clean Water Matters!

The diverse ecosystems, working landscapes, and vibrant communities that inspire and sustain us depend on clean water.

Learn More →



INFORMED AND INVOLVED PUBLIC

WatershED Matters Website

WatershED Matters

About CBEI

Watershed Education

CBEI Programs

Resources

News & Media



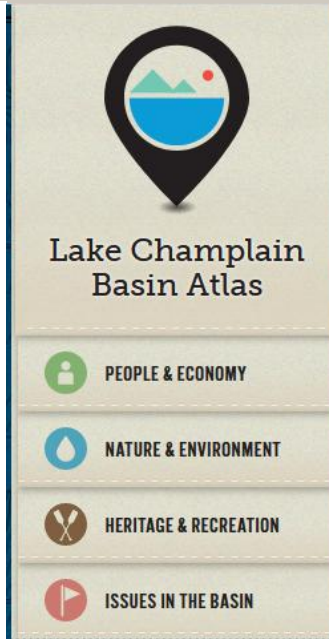
About CBEI

[Home](#) > [About CBEI](#)



INFORMED AND INVOLVED PUBLIC

Lake Champlain Basin Atlas Website



EXPLORE
OUR
LAKE

Explore the abundant natural resources and rich history of the Lake Champlain Basin with these maps, figures, fact sheets and additional resources.

[ABOUT THE ATLAS >](#)



INFORMED AND INVOLVED PUBLIC

Property Assessment Program



INFORMED AND INVOLVED PUBLIC

Social Marketing Campaign(s)



INFORMED AND INVOLVED PUBLIC

Keep Our Lakes Clean. Not Green.



Even if you live far from a lake or river, your lawn and yard care can affect water quality. You can help keep Lake Champlain clean!

Learn How You Can Help



Media Relations



INFORMED AND INVOLVED PUBLIC

Education & Outreach

- Current Work
- Priorities
- **Challenges**

Assessment & Evaluation



Reaching New Audiences



INFORMED AND INVOLVED PUBLIC